

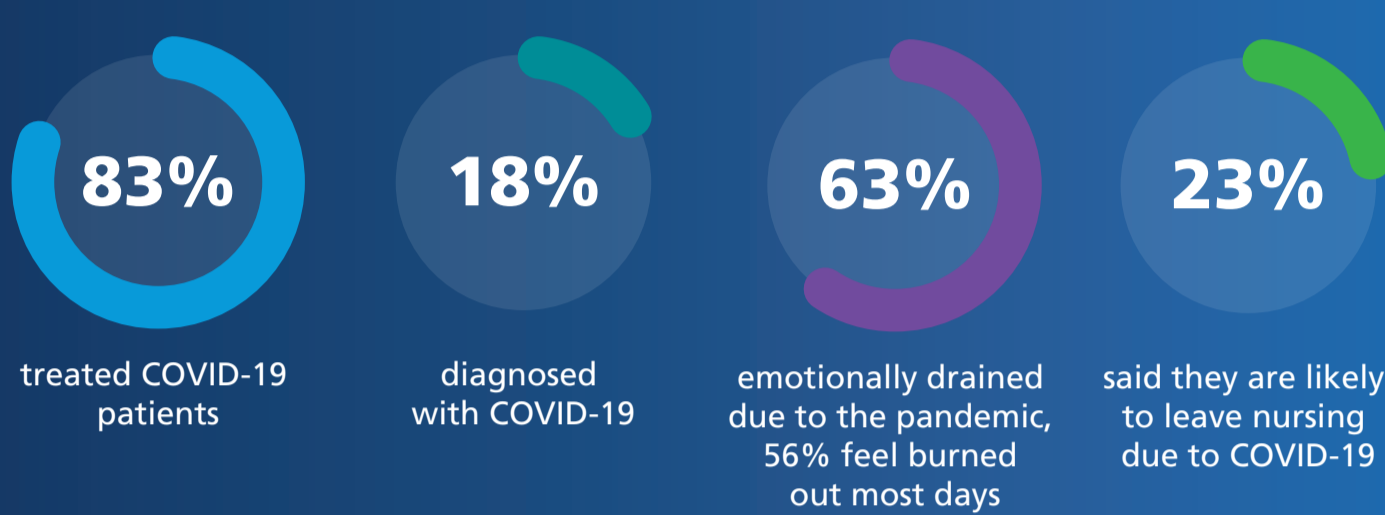
Nursing and the Nation: Extreme Challenges, Extraordinary Impact

2021 Survey of Registered Nurses

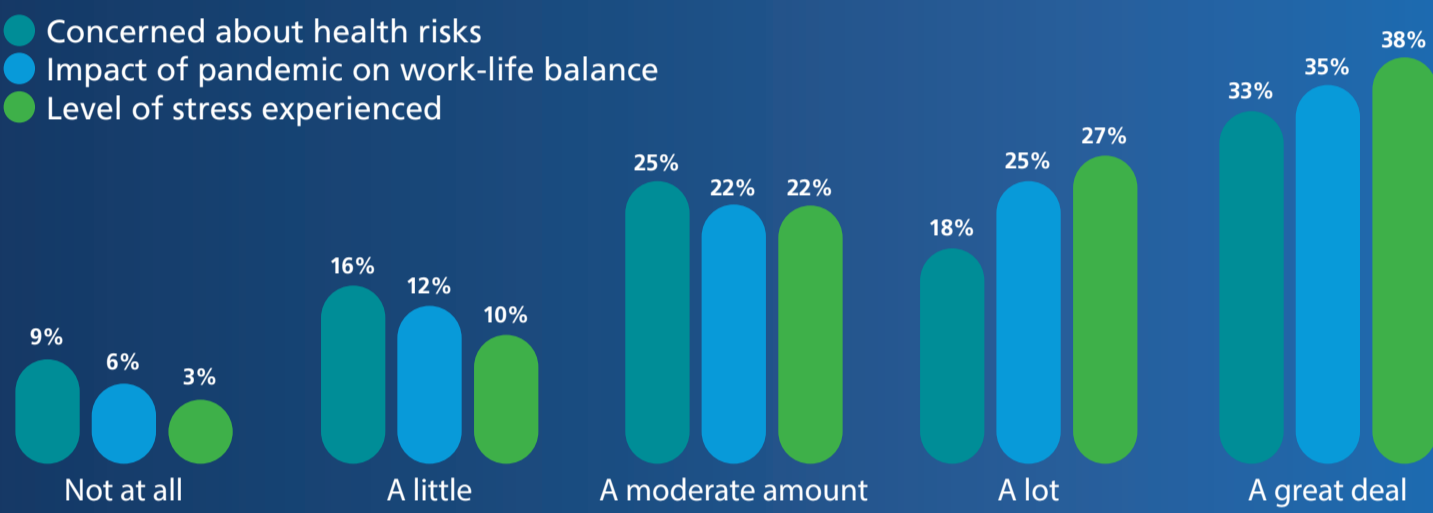
More than 6,500 Registered Nurses have spoken about the impact COVID-19 has had on them, their profession, and personal lives. We are listening – and acting.

This infographic illustrates the nurses' mental health and wellbeing, educational plans, while providing unique data on diversity, equality, and inclusion in the healthcare environment.

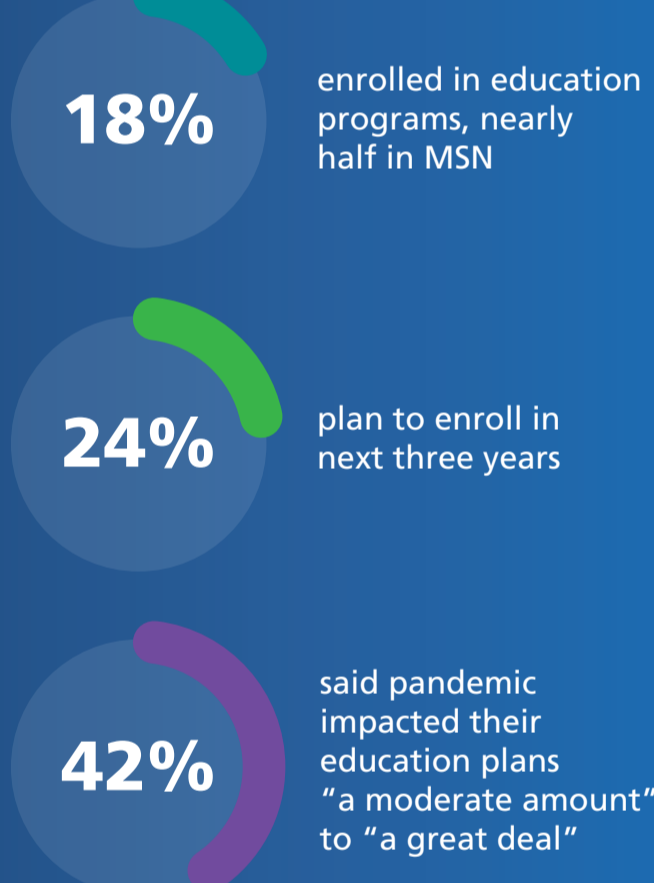
Mental health & wellbeing



Impact of working throughout the pandemic



Education & training



In the past year while working as a nurse, have you provided direct care to patients with COVID-19?

	Yes	No
Enrolled in nursing education program	19%	14%
Planning to enroll in nursing education program	48%	42%
Enrolled in advanced practice program	9%	5%
Planning to pursue advanced practice program	33%	27%
Pandemic impacted education plans	18%	10%

Diversity & inclusion



Diverse RNs have greater negative perceptions about equitable opportunities and workplace support for diversity compared to white and heterosexual RNs. Diverse RNs also have higher career satisfaction.

Solving the mental health, wellness, and inequality problems that nurses face today is one of our greatest priorities. Healthy communities require healthy nurses. The pandemic has further highlighted the inequities in healthcare that we must address, including the social justice issues that affect broader society. We have to embrace, co-create, and drive new solutions to the nationwide crisis in nursing.

—Dr. Cole Edmonson, DNP, RN, FAAN
 Chief Experience and Clinical Officer
 AMN Healthcare